

**Incredible results.
Happy students.**

Why Watkinson.



Watkinson School, Hartford's oldest independent school,

has been dedicated to educational excellence since 1881. Our mission is to develop in our students the power to shape their lives and the world around them. Watkinson students are encouraged to think critically and engage meaningfully, fostering a love of learning. As a result, they succeed at the finest colleges in the country, as Watkinson graduates are known to think deeper, question critically, and engage more fully in their

learning. They know what it means to contribute to a seriously enjoyable learning community.

With your support, this level of educational excellence can continue for generations of students at Watkinson. There are myriad ways our broad community invests in the now and in the future. Your generosity will contribute to our three main areas of critical focus: providing educational opportunities to a broad range of students through

scholarship; enhancing the working experience for our world-class faculty; and maintaining modern, state-of-the-art buildings and grounds.

Be part of supporting Watkinson, and change lives for those who come to campus each day. Your investment is meaningful and deeply important for today, tomorrow, and forever. We cannot thank you enough for your consideration.



Your Immediate Impact at Watkinson.





Your Gift to Watkinson's Annual Fund Makes a Lasting Impact

Every contribution to Watkinson's Annual Fund is vital in sustaining the school's mission of ensuring each student develops the skills to shape their lives and the world around them through an educational program that deeply engages and challenges all learners. Gifts to The Fund for Everyday Excellence are unrestricted, meaning your donation goes directly toward meeting the most immediate and pressing needs of our school community.

Why Your Gift Matters

- ***Supports Daily Operations:*** The Fund for Everyday Excellence goes directly toward Watkinson's annual operating budget. From classroom supplies to campus maintenance, your gift ensures that essential resources are

available to keep our school running safely and smoothly.

- ***Expands Learning Opportunities:*** Your donation helps enhance Watkinson's robust academic and extracurricular programs. Whether it's funding athletic team uniforms, theater costumes, or field trips for Global Studies and Creative Arts programs, your support provides students with the tools they need to excel both inside and outside the classroom.

- ***Strengthens Our Community:*** Your contribution directly supports financial aid programs, making education more accessible to a diverse range of students, and helps retain the exceptional faculty who are the backbone of Watkinson.

Scholarships At Watkinson.





Gifts to Watkinson's **Impact Scholar Award** help provide prestigious merit scholarships to new students in recognition of their outstanding academic achievements, talents, character, and contributions to their school community. *Impact Scholar Awards* are given with the expectation that recipients will be exceptional members of Watkinson's diverse and vibrant school community, and are awarded to students whose values and aspirations align with the school's mission and vision, fostering a sense of shared purpose and commitment.

By awarding these merit scholarships, Watkinson School:

- invests in the development of future leaders and thinkers
- recognizes the potential of these students to make a positive impact on both our school and the world.

Merit scholarships are renewable annually until graduation and recipients may also apply for financial aid. Watkinson seeks to ensure that exceptional students, regardless of their financial background, have the opportunity to attend.



SCAN ME
*Learn more about
Impact Scholars*



The **Watkinson Now Fund** gives the Admissions office the ability to provide multi-year scholarships to new and current students whose only barrier to Watkinson is financial. Every gift to the *Watkinson Now Fund* helps change students' lives by giving them the opportunity and benefits of a Watkinson education, including a love of learning, the ability to think critically, the passion to speak up and self advocate when needed, and the power to shape their lives and the world around them. Each and every gift also creates financial

strength for Watkinson by creating a new stream of scholarship revenue in addition to the over \$3 million dollars in financial aid that Watkinson awards annually. Each year, nearly 30 students benefit from the Watkinson Now Fund, receiving awards ranging from partial aid to full-tuition scholarships. By supporting the Watkinson Now Fund, donors help create opportunities for talented students to thrive in an inclusive, transformative educational environment



SCAN ME
*Learn more about
Watkinson Now*

Change A Life, Fund A Lifer is our bold step in establishing a new and heightened giving culture at Watkinson.

A “Lifer” is a student who comes to Watkinson as a sixth grader and stays for seven years, experiencing everything the school has to offer. These students thrive at Watkinson and beyond as their place in the school deepens and solidifies over time. Learning in a safe and encouraging community, Lifers develop confidence and a love of learning, and shed traditional fears — like public speaking, failing, or trying new things — and become mature, thoughtful, intelligent, compassionate thinkers and doers. They benefit from the educational continuity of moving from 8th

to 9th grade here, a seamless transition designed to help students develop in authentic and powerful ways.

These Lifers also change Watkinson with their insights, their experiments, their commitments, their questions. We are a better school for their presence.

Change a Life, Fund a Lifer recognizes the importance of this relationship. A commitment from a donor covers the cost of a Watkinson education from 6th grade through graduation and changes the life of a student in the process. Investment in this program demonstrates the collective belief in the power of a Watkinson education.



SCAN ME

*Learn more about
CALFAL*





Grace Scholars at Watkinson, created in 2018 by founding donors Janice and David Klein, is a fund designated to enable 8th-grade graduates of Grace Academy, in Hartford, to enroll at Watkinson for high school.

Watkinson has a long-standing relationship with and commitment to Grace Academy, which was established in 2010. The students who benefit from Grace Scholars at Watkinson demonstrate the qualities and characteristics most closely associated with Grace Academy and Watkinson School: determination, an exemplary work ethic, grace under pressure, and a clear sighted vision of the possibilities that await a young woman of substance when they aspire to succeed.



SCAN ME
*See profiles of
Grace Scholars*

City Scholars, implemented in 2017 as part of our five-year strategic plan, is a one-year program providing a post-graduate experience at The Academy at Watkinson for deserving graduates of Hartford public high schools. The Academy is a bridge year for college-bound students who are not yet college-ready. The program combines classes at Watkinson, helping students strengthen their high school transcript, with access to the University of Hartford or the University of St. Joseph to help students develop the confidence that college requires. City Scholars are guided through the college admissions process by Watkinson's expert college counselors.



SCAN ME

*See profiles of
City Scholars.*





**Supporting Watkinson's
Endowment.**



Watkinson's endowment represents a lasting legacy that supports the unique and transformative education offered at Watkinson School. By supporting Watkinson's endowment, you help create a sustainable funding source that strengthens the school's financial foundation and enhances the school's ability to fulfill its educational mission.

While the principal value of your donation is kept in tact, a portion of the earnings on the endowment are used to support the school's operating budget and strategic initiatives. Some of the critical areas supported by Watkinson's endowment include:

- **Scholarships and Financial Aid:** Ensures access to a world-class education for a diverse group of students.
- **Teacher Salaries and Professional Development:** Helps attract and retain the best educators.

- **Facilities Maintenance and Upgrades:** Supports ongoing improvements to buildings, classrooms, and other infrastructure that support teaching and learning.
- **Special Programs:** Funds exceptional extracurriculars, arts, athletics, or new academic initiatives.

Building the endowment means investing in the diverse voices, talents, and passions of our students, year after year. This financial foundation gives us the flexibility to innovate and the resilience to continue providing a nurturing environment, regardless of economic changes. With a strong endowment, the Watkinson experience can remain accessible to students from all backgrounds and the school can invest in its mission for generations to come. We invite you to be part of this legacy.



SCAN ME

See a full list of Woodruff Society Members here.

Enhancing Our Campus.





Capital projects at Watkinson are an investment in creating an intentional, thoughtful physical space that enables students to shape their lives and futures. By investing in Watkinson's facilities, you directly support environments that are thoughtfully designed to foster growth, collaboration, and exploration. From innovative classrooms to inspiring arts and athletic facilities, every capital project makes a tangible difference in the quality and depth of our students' education.

Our campus is more than a collection of buildings; it's a place where students come to discover who they are and who they want

to become. With each new improvement, we're shaping environments and experiences that encourage students to push their boundaries, pursue their passions, and gain the skills they'll need to thrive in the world beyond Watkinson.

Watkinson's leadership team has developed a capital plan in alignment with the school's long-term strategic goals. These represent crucial and timely areas of need for campus improvement and enhancement. If this type of investment interests you, please consider joining us in creating spaces where students can dream big, learn boldly, and make a difference.



SCAN ME

Contact us to learn more about capital projects.



**Your Legacy
At Watkinson.**



Watkinson's **Woodruff Society** has deep roots stemming from the lessons and legacy of Archibald Woodruff.

Woodruff was the president of Watkinson's Board of Trustees from 1977 until his passing in 1984. Prior to that, he was a professor emeritus at the University of Hartford following his chancellorship and presidency (1967-77). Arch and his wife Barbara made Watkinson the beneficiary of four forms of planned gifts and it was then that the school's planned giving effort began.

The Woodruffs' investment attracted the notice and commitment of other donors,

inspiring many individuals, couples, and families to include Watkinson in their wills; these gifts continue to reverberate, growing stronger every year. Woodruff Society members are investing in the potential of our students and our school. In great measure, it is the generosity and vision of these people who will help shape Watkinson's future.

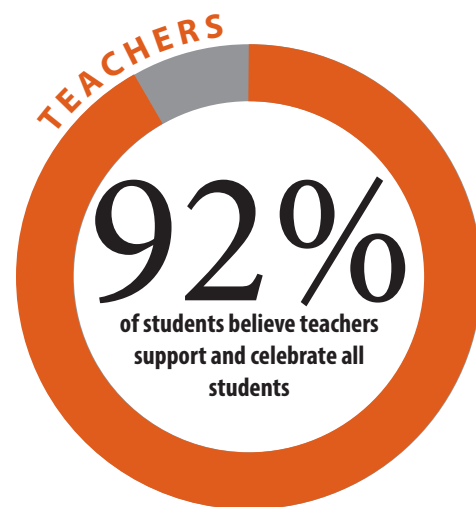
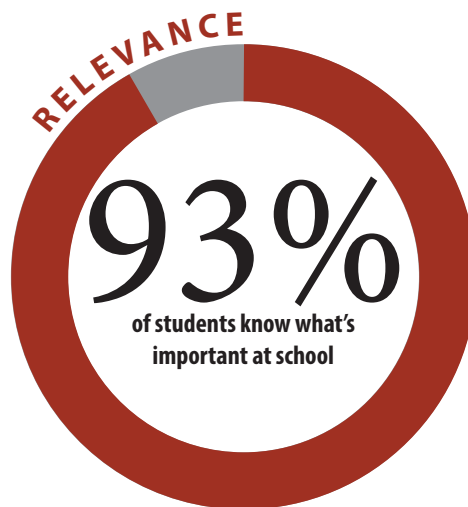
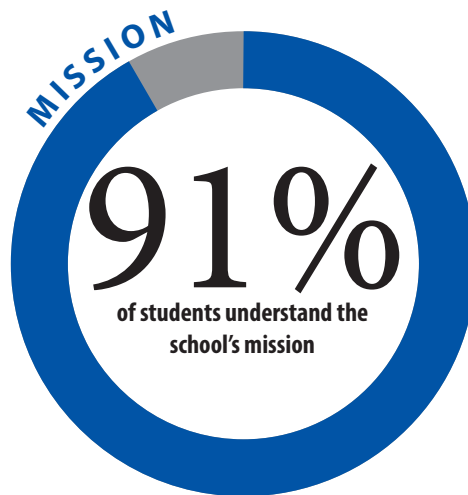
By taking the important step of making a will and naming Watkinson as one of your beneficiaries, you ensure that the school's exceptional education is available for generations of Watkinson students.

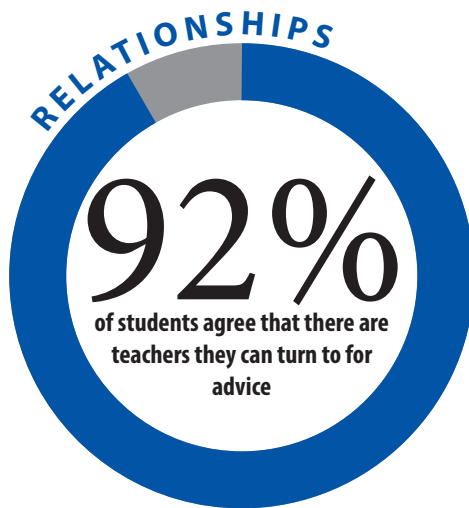
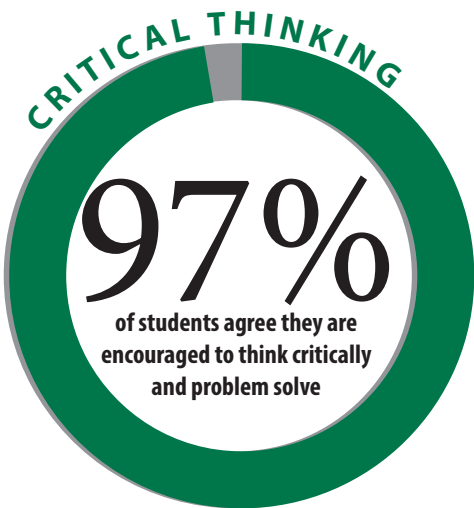
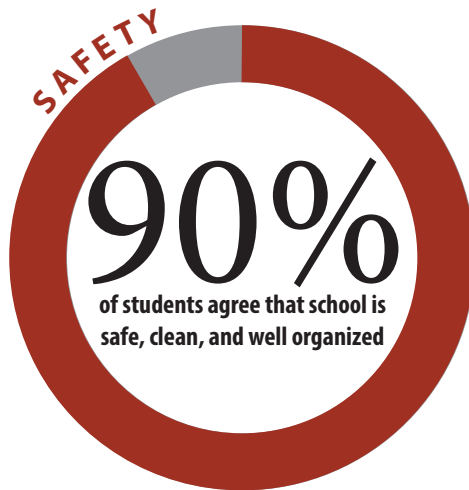
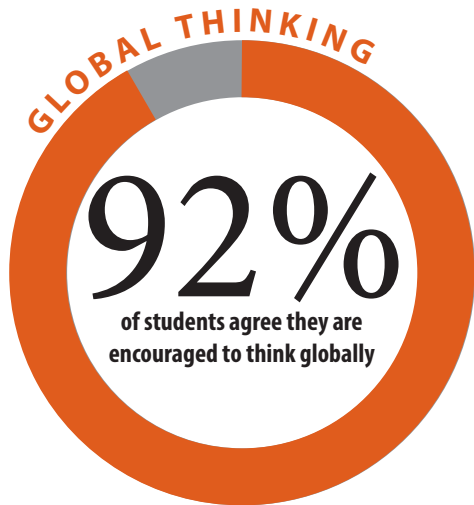


SCAN ME

Learn more about the Woodruff Society here.

Results.





* source is recent New England Associations of Schools and Colleges Accreditation student surveys.



Watkinson SCHOOL

Watkinson School
180 Bloomfield Ave., Hartford, CT 06105
co-ed independent day school for grades 6-12/PG
watkinson.org